

Library Proxy Setup for the PC & Laptop (IE)

The Nilai University Library Proxy Server allows accessing restricted library resources including electronic books, electronic journals and databases from virtually any off-campus location. A proxy server connection only affects data sent through the Web browser you configure to use the proxy.

IMPORTANT:

1. Do not configure your Web browser until you have applied for and received a proxy account
2. Don't use proxy connection for all Web browsing (i.e when you aren't using the Nilai Library resources).

Turn off the proxy when you don't need it or consider setting one browser to use the proxy and leave another 'unproxied'

Setting for Internet Explorer Web Browser

1. Open your Web browser
2. For Windows: Under "**Tools**", select "**Internet Options**"

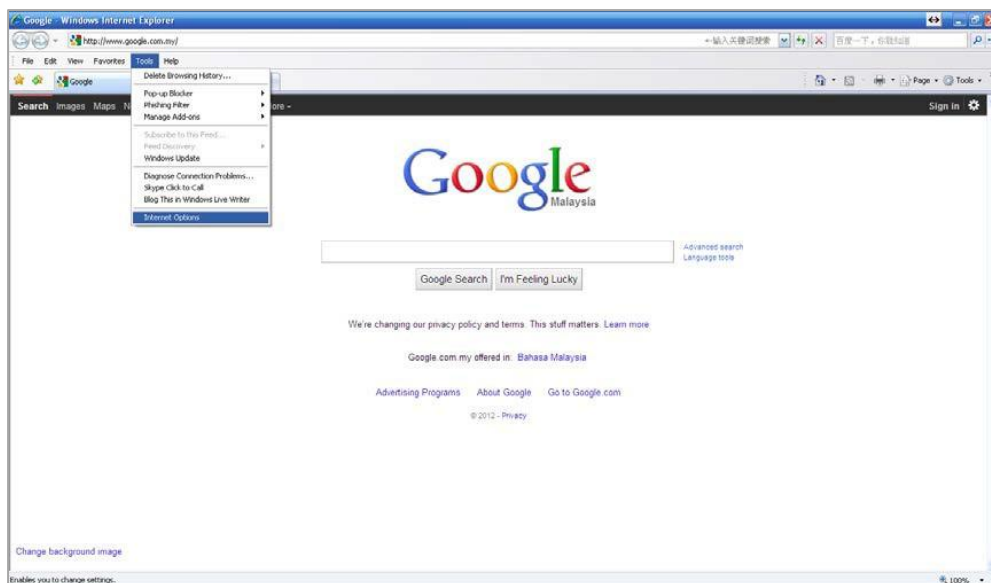


Figure A: Internet Explorer Main Page

- a. Select the "**Connections**" category icon and then click on "**LAN Settings**" tab

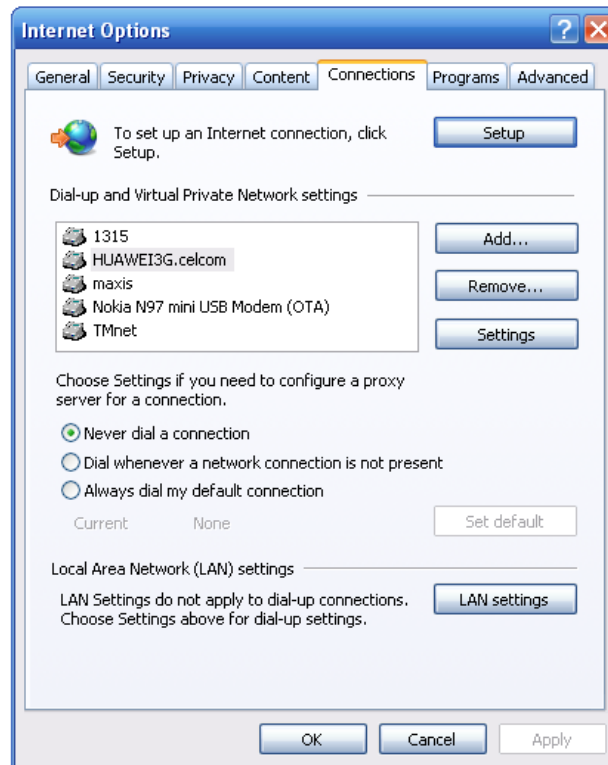


Figure B: Internet Options Configuration Page

- b. Checkbox "**Automatic detect settings:**"
c. Checkbox "**Use automatic configuration script**" and key in the address "<http://www.nilai.edu.my/proxy.pac>" and press "**OK**" to apply the setting.

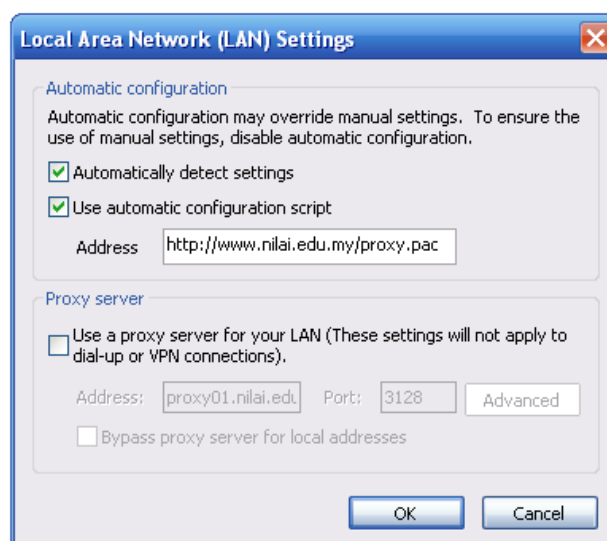


Figure C: LAN Setting Page

No Proxy Setting for Web Browser

Screenshot for Internet Explorer

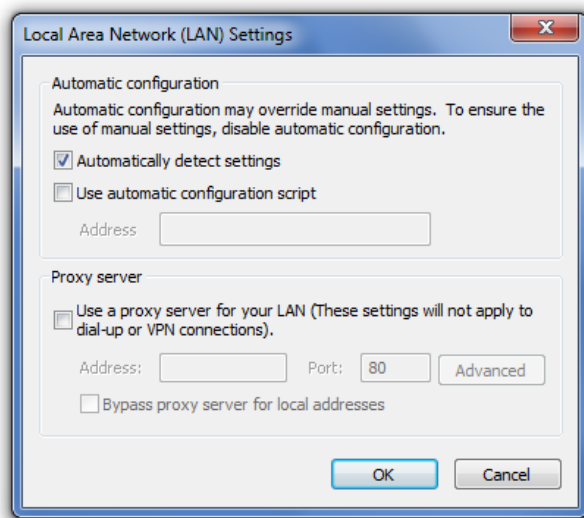


Figure A: Connection setting for Internet Explorer